

Laboratory Contact Information

Below is the MHC laboratory contact information to assist with laboratory service requests; such as add-on testing, courier pick up, test menu/order support, and/or result/test interpretation support.

Munson Healthcare Laboratory Services
[Lab Services](#) | [Munson Healthcare](#) | [northern Michigan](#)

East Region Laboratory Services

Charlevoix Hospital Laboratory
14700 Lake Shore Dr. Charlevoix MI
Phone 231-547-8541 Fax 231-547-8829

Grayling Hospital Laboratory
1100 East Michigan Ave Grayling MI
Phone 989-348-0352 Fax 989-348-0399

Otsego Hospital Laboratory
825 N Center Ave Gaylord MI
Phone 989-731-2187 Fax 231-213-8709

South Region Laboratory Services

Cadillac Hospital Laboratory
400 Hobart St Cadillac MI
Phone 231-876-7295 Fax 231-876-7854

Manistee Hospital Laboratory
1465 East Parkdale Ave Manistee MI
Phone 231-398-1153 Fax 231-398-1635

Paul Oliver Memorial Hospital Laboratory
224 Park Ave Frankfort MI
Phone 231-352-2204 Fax 231-352-2234

**Munson Medical Center
Anatomic Pathology Services**
1105 Sixth St Traverse City MI
Phone 231-935-6108 Fax 231-935-7528

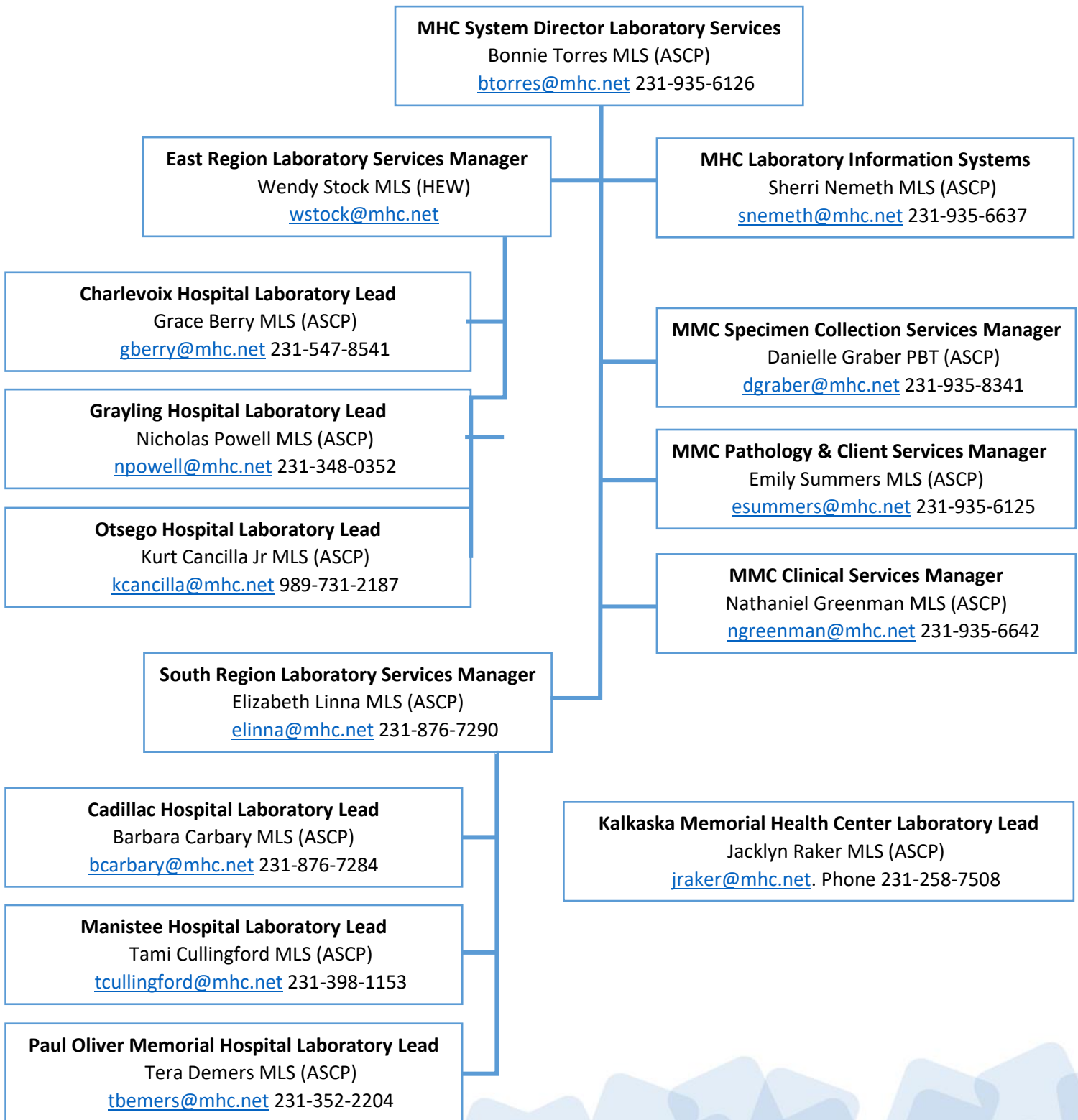
**Munson Medical Center
Clinical Laboratory Services**
1105 Sixth St Traverse City MI
Phone 231-935-6100 Fax 231-935-3203

**Munson Medical Center
Courier/Supplies Laboratory Services**
1105 Sixth St Traverse City MI
Phone 231-935-6100 Fax 231-935-7389

Kalkaska Memorial Health Center Laboratory
419 South Coral St Kalkaska MI
Phone 231-258-7508 Fax 231-258-7564

Laboratory Leadership Contact Information

Below is the MHC laboratory leadership structure & contact information to assist with laboratory service inquiries.



Grand Traverse Pathology Contact Information

Below is the Grand Traverse Pathology leadership structure & contact information to assist with laboratory inquiries.

