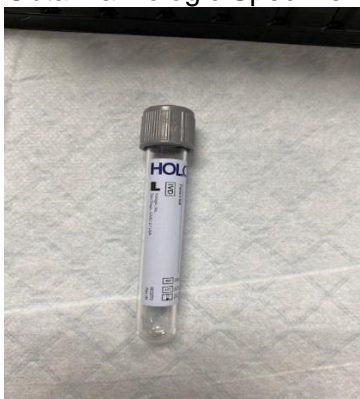


CoVid Sample processing to send specimen to MMC for testing for the COVIDP

Specimen Processing:

1. Obtain a Hologic Specimen Lysis Tube (SLT)



2. Label the SLT tube with the CID label (or label from Mediatech or Orchard).
3. Uncap the SLT and retain the cap.
 - a. Do not put the cap down on anything since it could contaminate the specimen.
4. Using a sterile disposable graduated transfer pipette, transfer 500 μ L (first line from the tip of the pipette) of the patient specimen to the SLT.
5. Discard the pipette in the biohazard trash.
6. Recap the tube and gently invert three times to ensure viral inactivation and a homogeneous mixture.
7. Process the SLT tube to be sent to MMC following your normal process
8. Retain original patient sample at ordering location unless other tests that are done at MMC are requested on the sample.